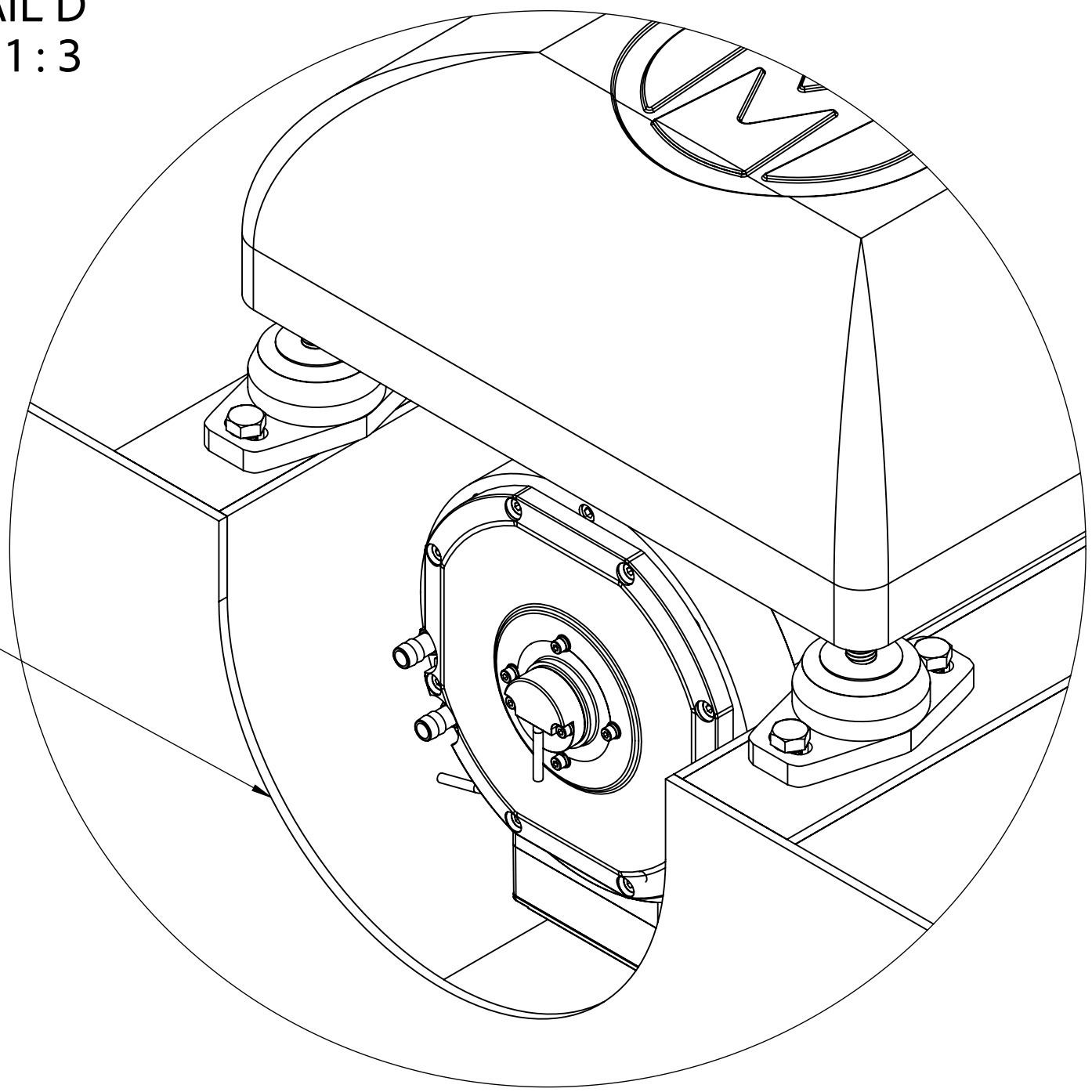
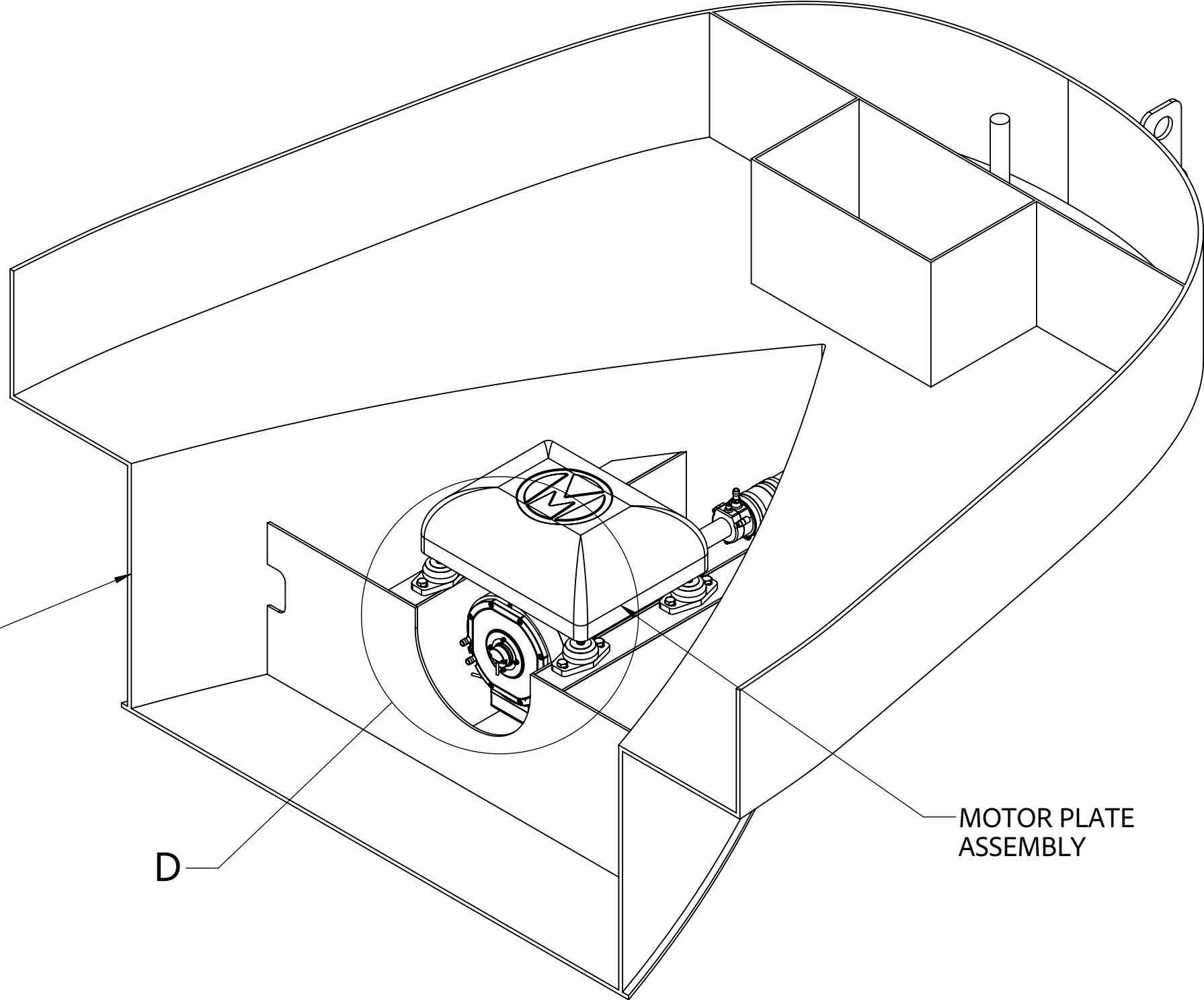


DETAIL D
SCALE 1:3

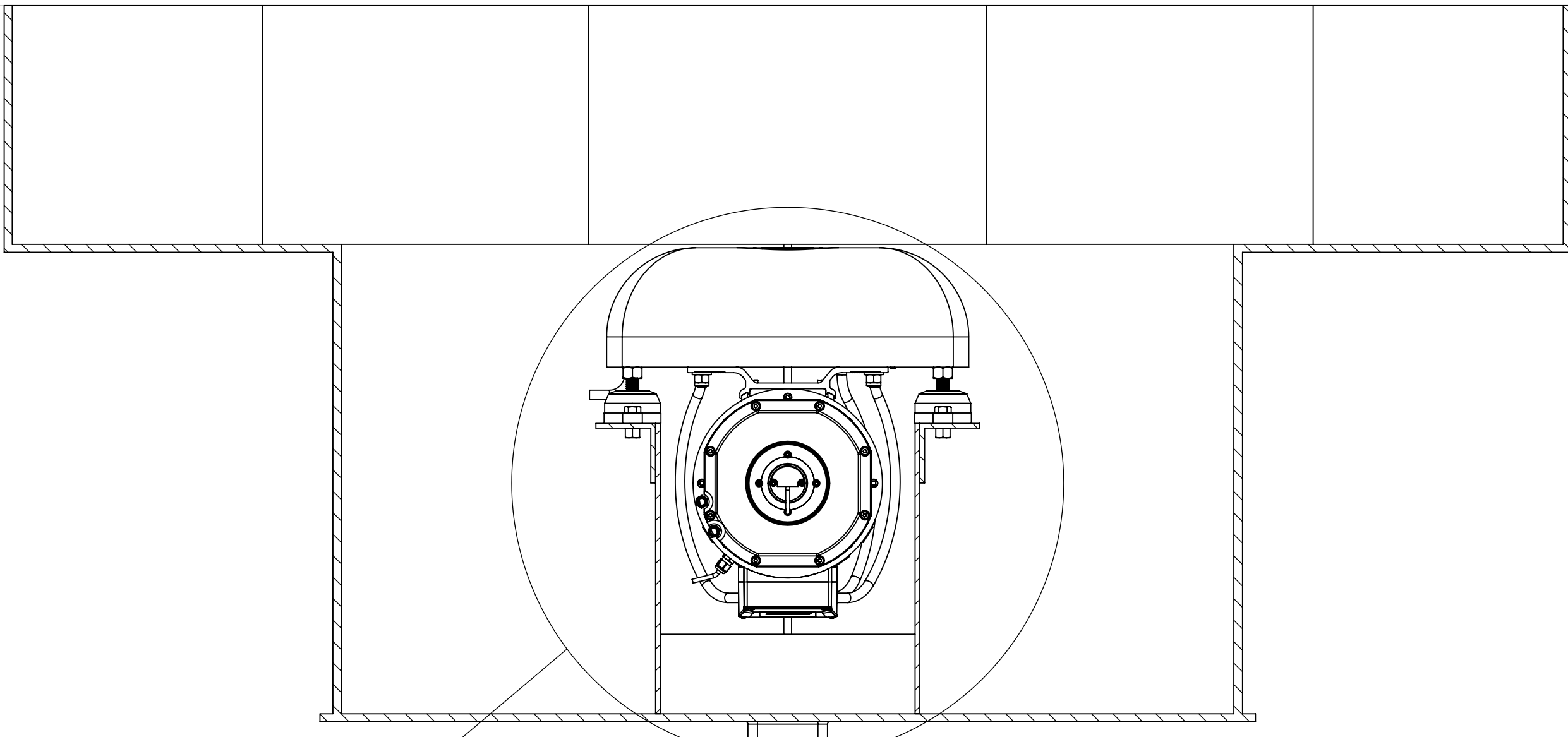
CUTOUT IN BULKHEAD
CROSSPLATE TO PROVIDE
ACCESS TO REAR OF
MOTOR FOR FIXINGS AND
MAINTENANCE



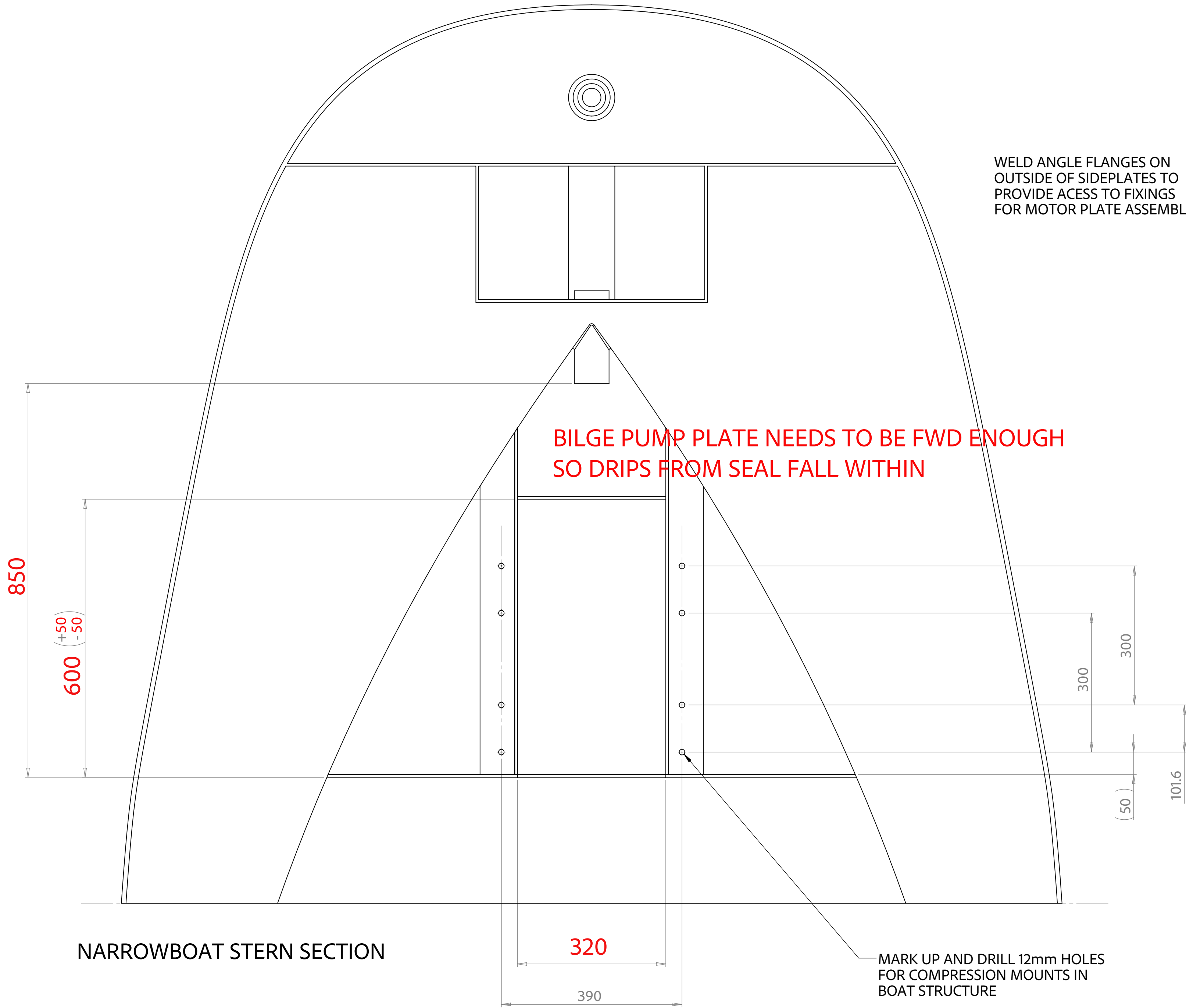
NARROWBOAT STERN
SECTION



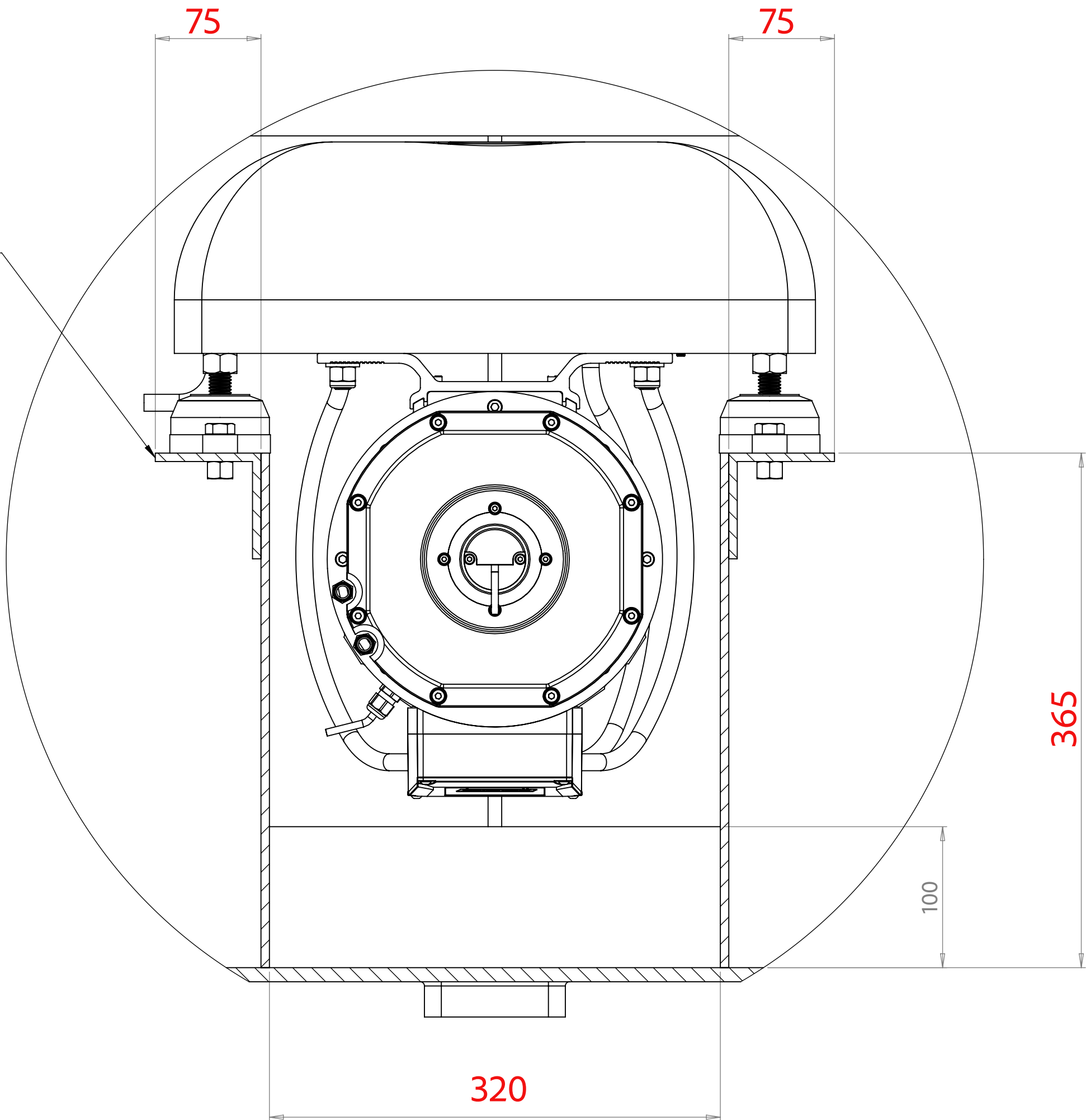
SECTION B-B



BILGE PUMP PLATE NEEDS TO BE FWD ENOUGH
SO DRIPS FROM SEAL FALL WITHIN

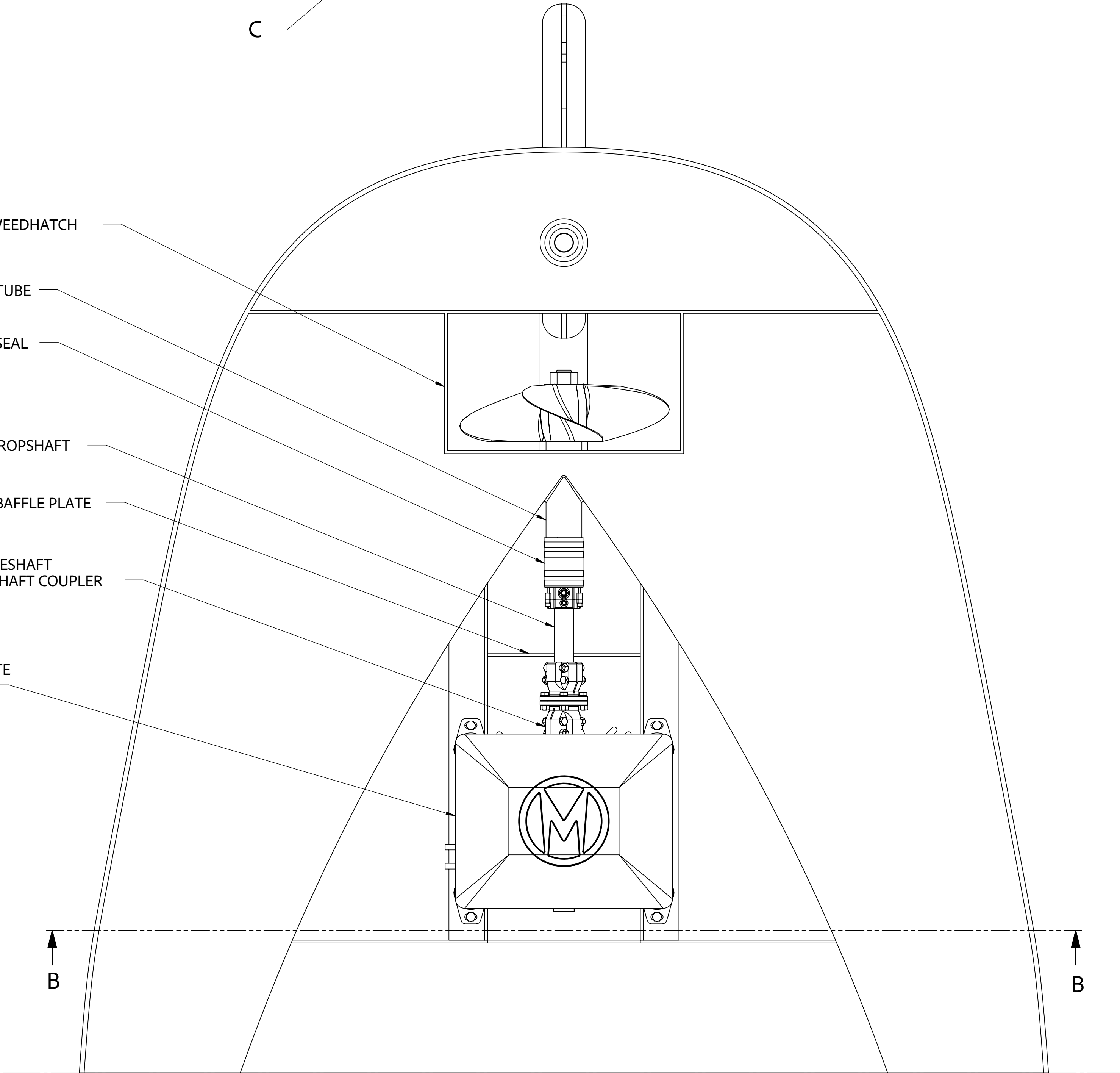


WELD ANGLE FLANGES ON
OUTSIDE OF SIDEPLATES TO
PROVIDE ACCESS TO FIXINGS
FOR MOTOR PLATE ASSEMBLY



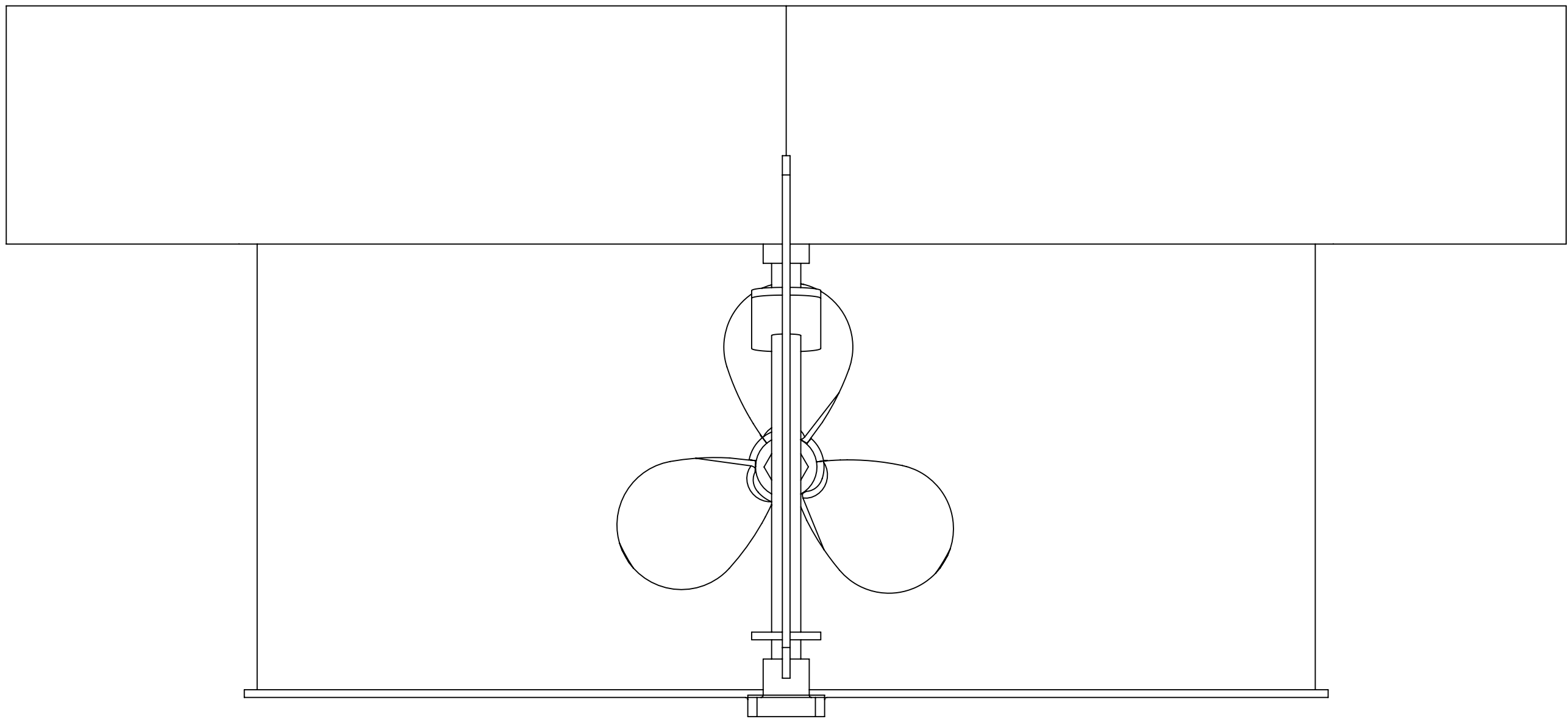
DETAIL C
SCALE 1:3

STANDARD WEEDHATCH
PROPSHAFT TUBE
PROPSHAFT SEAL
STANDARD PROPSHAFT
BILGE PUMP BAFFLE PLATE
MOTOR DRIVESHAFT
WITH SPLIT SHAFT COUPLER
MOTOR PLATE
ASSEMBLY

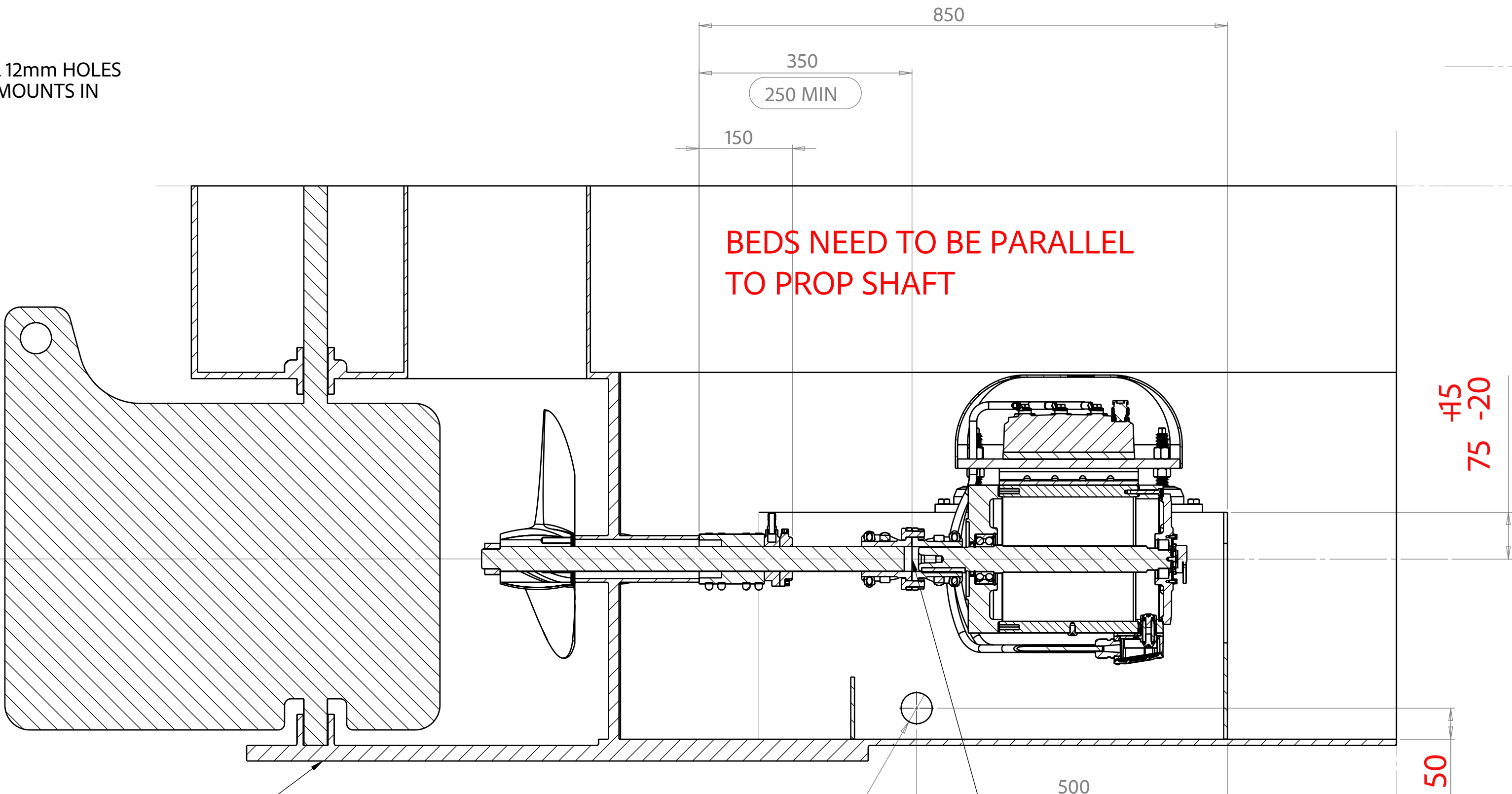


NARROWBOAT STERN SECTION

MARK UP AND DRILL 12mm HOLES
FOR COMPRESSION MOUNTS IN
BOAT STRUCTURE

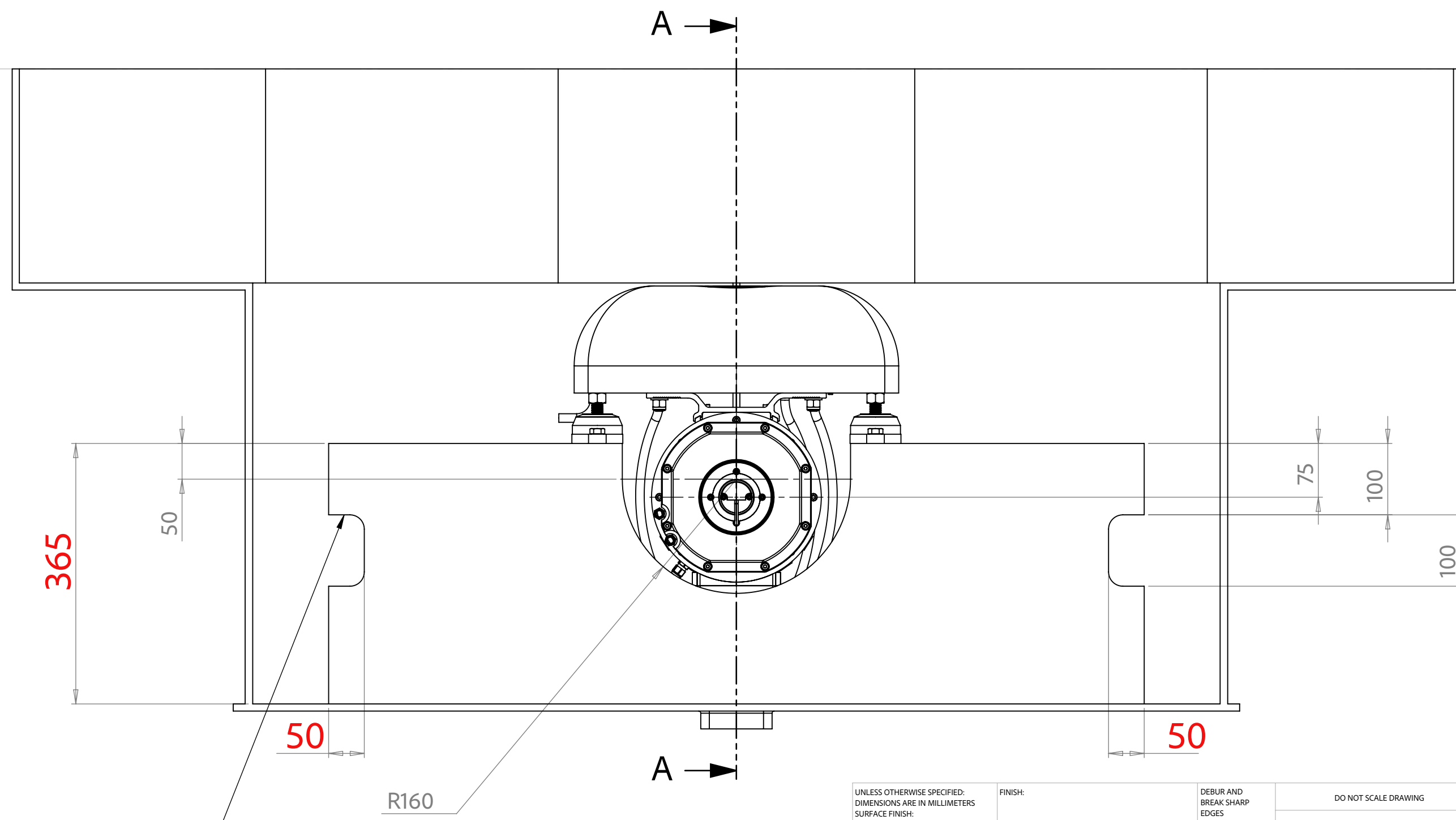


BEDS NEED TO BE PARALLEL
TO PROP SHAFT



SECTION A-A

ALIGN MOTOR DRIVESHAFT
WITH PROPSHAFT BY ADJUSTING
FIXINGS ON MOTOR PLATE
COMPRESSION MOUNTS BEFORE
CONNECTING WITH SPLIT SHAFT
COUPLER WHEN FULLY ALIGNED



ADD 50mm CUTOUTS TO SIDES OF BULKHEAD
FOR CABLE AND PIPE ACCESS ALONG WITH
Ø50mm HOLES ON UPRIGHT PLATES ON BOTH
SIDES OF THE MOTOR

REVISION A: ADDITION OF CABLE AND PIPE CUTOUTS
TO UPRIGHT BULKHEAD PLATES

UNLESS OTHERWISE SPECIFIED: DIMENSIONS ARE IN MILLIMETERS UNLESS OTHERWISE SPECIFIED: DIMENSIONS ARE IN MILLIMETERS				DESIGN AND DRAWING CHECKS		REVISIONS		TITLE		SCALE		SHEET NO.	
NAME	SIGNATURE	DATE	DATE	DATE	DATE	DATE	DATE	DATE	DATE	DATE	DATE	DATE	DATE
DESIGNER	PS	2024/04	2024/04	2024/04	2024/04	2024/04	2024/04	2024/04	2024/04	2024/04	2024/04	2024/04	2024/04
CHECKED	TS	2024/04	2024/04	2024/04	2024/04	2024/04	2024/04	2024/04	2024/04	2024/04	2024/04	2024/04	2024/04
APPROVED													
MATERIAL													
WEIGHT													

MOTHERSHIP MARINE
NARROWBOAT
ELECTRIC MOTOR MOUNT